

# TLDCM1211-2-701TF

DC COMMON MODE FILTER

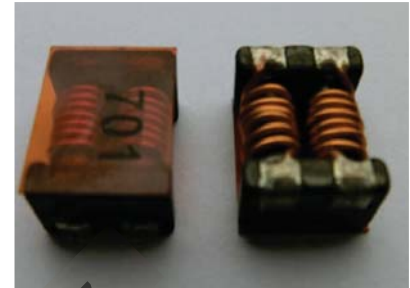
TOP-EMC

## GENERALS

This specification covers the engineering requirements for the TLDCM1211-2-701TF (DC Common Mode Filter)

## FEATURES

- A chip-type common mode filter for large current applications. Common mode impedance surpasses  $700\Omega$  at 100MHz. Noise is greatly suppressed.
- Capable of handling the highest current (up to 8A) of any chip-type common mode filter.
- Height and size have been considered, resulting in a compact and light-weight choke coil. Applicable for the miniaturization required to reduce the size and weight of portable equipment.
- The products contain no lead and also support lead-free soldering.
- This product does not contain regulated substances that are slated to be included in RoHS.



## APPLICATIONS

Used for power line noise suppression for any electronic devices  
Used to counter adapter/battery line noise for relatively large electronic devices such as notebook PCs, stand-alone word processors, etc

## TEMPERATURE RANGES

Operating	-40 to +125°C
Storage(After mount)	-40 to +125°C

## Part Number System

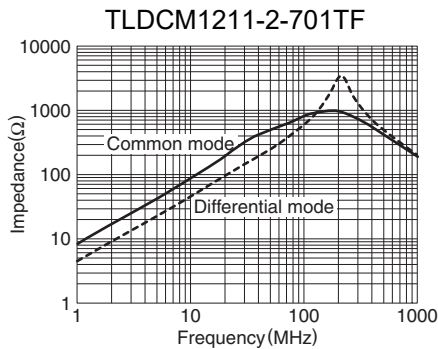
TLDCM   1211   -2   -701   T   F  
①            ②            ③            ④            ⑤            ⑥

- ① Type: TLDCM
- ② External Dimensions (L×W) (mm) : 12×11mm
- ③ Number of Lines: 2
- ④ Impedance : 701=700  $\Omega$
- ⑤ Packing: Tape & Reel
- ⑥ Hazardous Substance Free Products : F

## ELECTRICAL CHARACTERISTICS

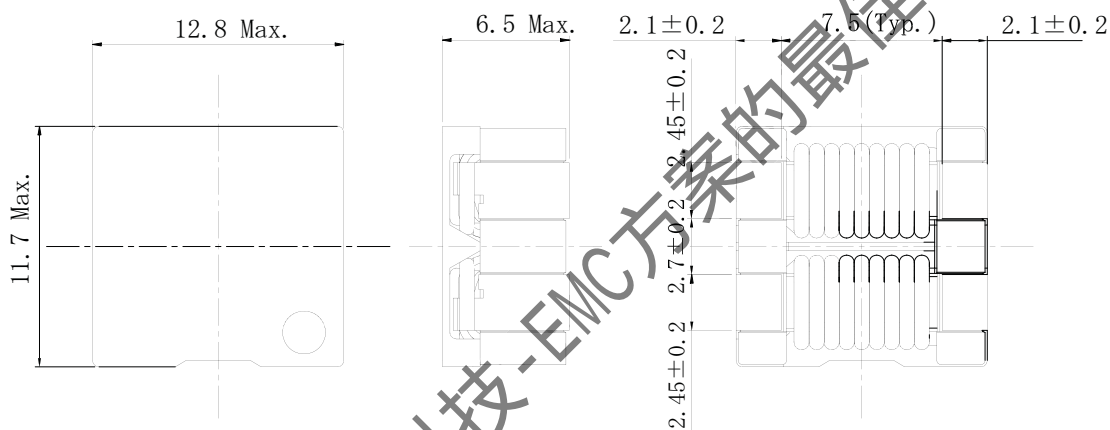
Part No.	Impedance ( $\Omega$ )[at 100MHz]	DC resistance (m $\Omega$ )max.	Rated current Idc(A)max.	Insulation resistance (M $\Omega$ )min.
TLDCM1211-2-701TF	700(min)	6.0	8A	10

**TYPICAL ELECTRICAL CHARACTERISTICS**  
**IMPEDANCE vs. FREQUENCY CHARACTERISTICS**

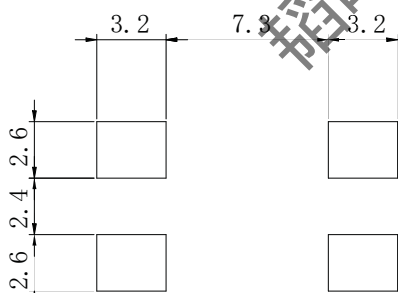


**SHAPES AND DIMENSIONS/CIRCUIT DIAGRAM/RECOMMENDED PC BOARD PATTERN(REFLOW SOLDERING)**

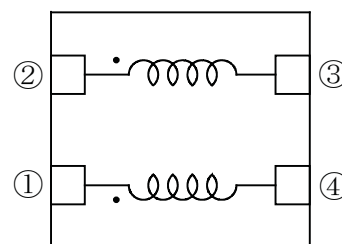
◆ **Dimensions (mm)**



◆ **Land Pattern (mm)**



◆ **Schematics (Bottom)**



**CONTACT INFORMATION**

SHENZHEN TOP-FLIGHT TECHNOLOGY CO.,LTD

4th Floor, C Building, Quansen Industrial Park , Bulong Road, Longhua New District, Shenzhen

Tel: 86 -755- 82908191 Fax: 86-755- 82908701 Email: kang@topleve.com

Website: <http://www.topleve.com>