

# TLDCM4520 SERIES

DC COMMON MODE FILTER

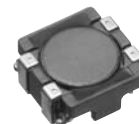
TOP-EMC

## GENERALS

This specification covers the engineering requirements for the TLDCM4520 Series (DC Common Mode Filter)

## FEATURES

- A chip-type common mode filter for large current applications. Noise is greatly suppressed.
- Height and size have been considered, resulting in a compact and light-weight choke coil. Applicable for the miniaturization required to reduce the size and weight of portable equipment.
- The products contain no lead and also support lead-free soldering.
- This product does not contain regulated substances that are slated to be included in RoHS.



## APPLICATIONS

Radiation noise suppression for power line (DVC, DVD cam, DSC, etc.)

## TEMPERATURE RANGES

|                      |               |
|----------------------|---------------|
| Operating            | -40 to +125°C |
| Storage(After mount) | -40 to +125°C |

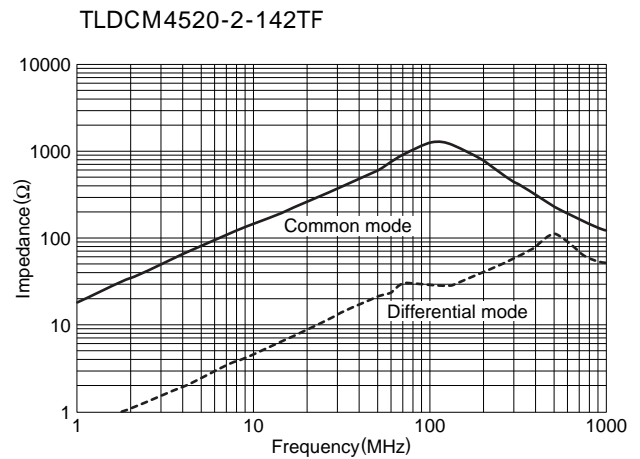
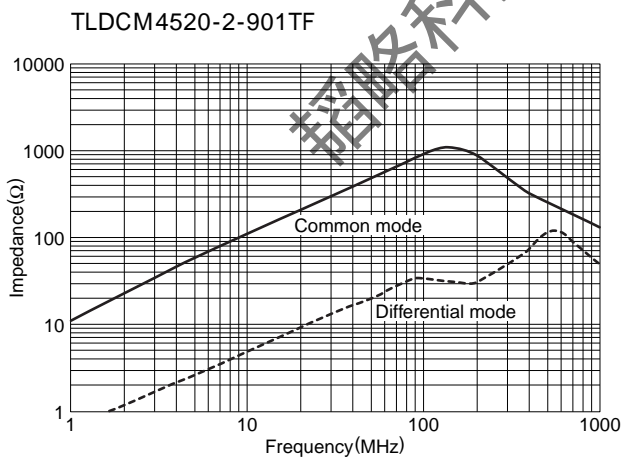
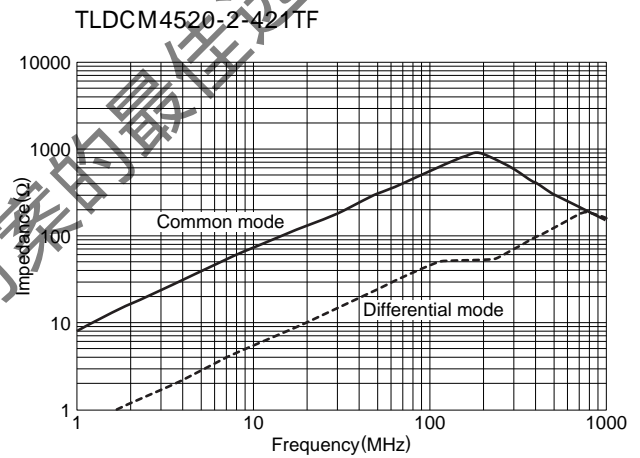
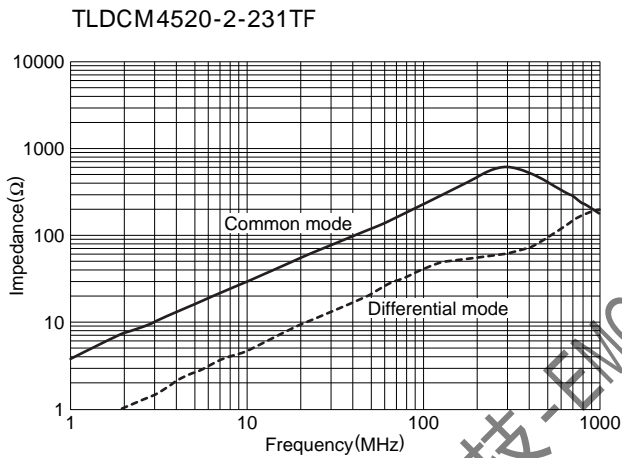
## Part Number System

TLDCM   4520   -2   -901   I   F  
①            ②            ③            ④            ⑤            ⑥

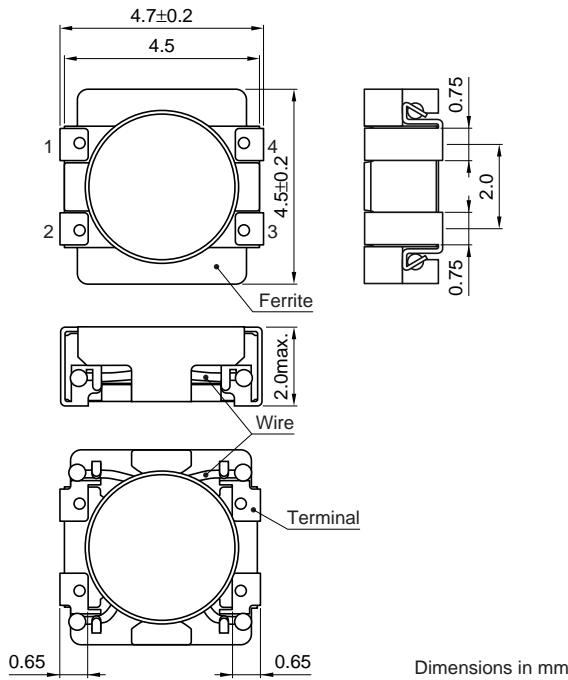
- ① Type: TLDCM
- ② External Dimensions (W×T) (mm) : 4.5×2.0mm
- ③ Number of Lines: 2
- ④ Impedance : 901=900 Ω
- ⑤ Packing: Tape & Reel
- ⑥ Hazardous Substance Free Products : F

## ELECTRICAL CHARACTERISTICS

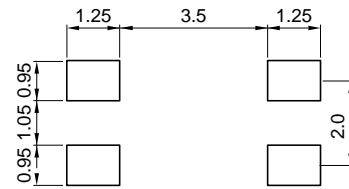
| Sunnycoil Part Name | Impedance***<br>Z (Ω) TYP.<br>@ 100 MHz | Rated Voltage<br>(V) | DCR<br>(Ω) ±40%<br>(each winding) | Rated Current<br>(A) |
|---------------------|---|----------------------|-----------------------------------|----------------------|
| TLDCM4520-2-231TF   | 230                                     | 50                   | 0.05                              | 2.6max               |
| TLDCM4520-2-421TF   | 420                                     | 50                   | 0.055                             | 2.4max               |
| TLDCM4520-2-901TF   | 900                                     | 50                   | 0.06                              | 2.0max               |
| TLDCM4520-2-142TF   | 1400                                    | 50                   | 0.08                              | 1.5max               |



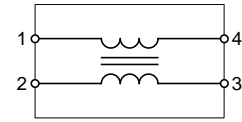
## Dimensions (mm)



## Land Pattern (mm)

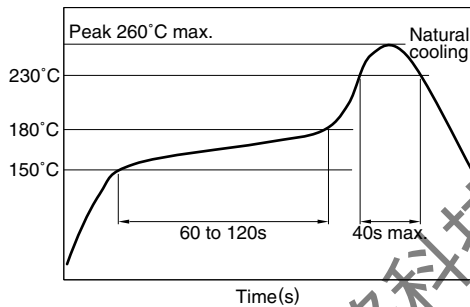


## Schematics (Bottom)



• No polarity

## REFLOW PROFILE FOR SOLDER HEAT RESISTANCE



## CONTACT INFORMATION

**SHENZHEN TOP-FLIGHT TECHNOLOGY CO.,LTD**

4th Floor, C Building, Quansen Industrial Park , Bulong Road, Longhua New District, Shenzhen

Tel: 86 -755- 82908191 Fax: 86-755- 82908701 Email: kang@topleve.com

Website: <http://www.topleve.com>